



The state-wide power outage that 'would never happen'

Leanne Adams
SA State Emergency Service
Manager Policy and Projects





- the context
- the event
- the fall out
- business continuity
- lessons

The context

STATE EMERGENCY SERVICE

- preceded by multiple extreme weather events
- a year with a record number of requests for assistance
- saturated catchments
- agency and personnel fatigue in emergency services and support agencies
- ongoing post-event recovery operations





May 9

- tidal inundation
- significant coastal damage
- damaging winds
- 1300 RFAs

22-26 July

- severe winds
- trees down
- power outages
- flooding incl. Adelaide Hills
- 900 RFAs

Sept/Oct

- severe winds
- state-wide power outage
- flooding in most major catchments
- 4280 RFAs

9-13 July

- damaging winds
- many trees down
- power outages
- record cold temps
- 3200 RFAs

mid-Sept

- widespread flooding in metro and Southern suburbs
- 1670 RFAs



Then...

- Murray River flooding
- Large hail storm, damaging Riverland crops



An unrealistic scenario

- state-wide blackout can't happen – exercise deemed unrealistic
- occurred just before peak hour in the CBD
- reduced telecommunications
- Parliament was sitting
- multiple impacts state-wide – flooding, tornadoes, storm damage, tidal surge
- widespread damage – coastal, community infrastructure,
- isolated communities
- new flood intelligence system and capability 'nearly ready'















\$7 PINTS
ALL THROUGHOUT
WIN
GREAT FOR THE
ICE BOX

Heineken
CHANGELER

COOPERS BREWERY
BEST EXTRA STOUT

Heineken

Premium
LIGHT

CARLTON
DRAUGHT

COOPERS BREWERY
ORIGINAL PALE ALE

WEST
END
DRAUGHT



QUEENSFORD

POP MART

Proudly supported by
ADELAIDE
CITY COUNCIL

LEASE

Proudly supported by
ADELAIDE
CITY COUNCIL

For





132

Telstra

ANGLICARESA





POLICE



Adelaide Metro

Customer Service

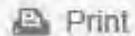


LANE





- people stuck in lifts
- emergency services diverted
- mobile phones go flat
- essential services in buildings
- traffic lights
- power to flood gauges out
- back-up power not working
- fuel pumps not working
- darkness in normally well-lit areas



Print



Email



Facebook



Twitter



More

SA weather: Embryos destroyed at Flinders Medical Centre after generator fails in blackout

Updated 30 Sep 2016, 11:01am

Embryos being prepared for transfer at a fertility clinic had to be destroyed due to a generator failure at Flinders Medical Centre during the South Australian blackout, the Health Minister says.

Jack Snelling told 891 ABC Adelaide 12 patients were affected by the tragedy on Wednesday, when wild storms knocked out power supplies to the entire state.

Back-up generators kicked in at Flinders Medical Centre after the blackout, but stopped after an hour, Mr Snelling said.



PHOTO: [Flinders Fertility](#) says impacted patients have been offered counselling. (ABC News: Gregor Salmon)

The blame game begins....

STATE EMERGENCY SERVICE



ENERGY MINISTER TOM KOUTSANTONIS

PREMIER JAY WEATHERILL

“South Australia hasn’t seen a storm like last week’s in living memory,”
“It essentially ripped out the spine of our electricity system.”

Premier Jay Weatherill



Federal Energy Minister Josh Frydenberg said that while last night's black out was not linked with South Australia's reliance on renewable energy, there were questions to be asked about the wisdom the state's rapid uptake of green power.



“that is a problem for SA and the government, Mr Weatherill has to answer for that.”

“I regret to say that a number of the state Labor governments have over the years set priorities and renewable targets that are extremely aggressive, extremely unrealistic, and have paid little or no attention to energy security,”

PM Malcolm Turnbull



Federal Opposition Leader Bill Shorten said it was “poor form” for the Coalition to make political points about renewables while the crisis was ongoing in South Australia.



State Opposition
Leader Steven
Marshall insists that
storm damage in one
part of the state
shouldn't knock out
the entire system.



Energy industry experts have criticised comments linking the blackout in South Australia to the states reliance on renewable power

NEWS



“If you’ve got a wind farm or a coal-fired power station at the end of a transmission line and it is taken out by a storm **IT DOESN’T MATTER WHAT THE ENERGY SOURCE IS”!**

- Tony Wood, Grattan Institute

29 SEP 2016 - 12:46PM

What if Godzilla is to blame for the Adelaide power outage?



Calls for enquiries and reviews

STATE EMERGENCY SERVICE

“Nevertheless, as a government there are always lessons that can be learned from an extreme weather event such as this. So it’s important there’s a thorough, independent review.”

Jay Weatherill



INDEPENDENT REVIEW
OF THE EXTREME
WEATHER EVENT
SOUTH AUSTRALIA
28 SEPTEMBER –
5 OCTOBER 2016

Report presented to the
Premier of South Australia

Review Authors
Gary Burns
Leanne Adams
Guy Buckley



and the memes.....

**DAD, WHAT'S THAT
DARK PLACE OVER THERE?**



THAT'S ADELAIDE, SIMBA.



**MEANWHILE AT THE SOUTH
AUSTRALIAN POWER PLANT**

BROKEN
NEWS

LIVE

SOUTH AUSTRALIA BLACKOUT
These pictures just into our newsroom



IT'S OFFICIAL:

WE DID IT!

Adelaide reaches
zero emissions



Meanwhile, back in the real
world....





Wakefield Regional Council

Welcome to
BLYTH
home of...

 **MID NORTH
SANDBLASTING**

 ROGER BARR trading as
**NORTHERN
WINDSCREENS**

medikagallery.com.au
Fine Art & Craft

THE BLYTH HOTEL
www.theblyth.com.au

Party & Hire

population 300 average rainfall 100mm





















on the West Coast
and Eyre Peninsula
things were getting
serious

Sorry, No
power!

WE ARE
CLOSED!





Kirton Point Primary School

NO POWER
= No
TOILETS

Thursday 29 Sept 10am Assembly
Friday 30 Sept Clothes and
Wheels Day
Friday Term 3 ends at 2.10pm

CLOSED

Happy and safe holidays! 😊



Cooled Cheese

PRICE
7

Cooled Cheese

LOW PRICE
ALWAYS
\$9.90

\$3

\$3

\$3

\$4

\$4

\$4.50

\$4.50

\$4.50

Special
3-15

Special
3-15

\$4

\$2

\$2

\$4

\$3

Hot
Food
From
LUNCH

Trading Hours:
Mon - Fri: 6am - 9pm
Hols:

EVERY DAY
FROM 6 AM TO 9
PM
STEAK SANDWICH WITH
THE LOT AT 7 AM
BACON & EGG MUFFIN

WE ARE
OPEN
Till The Sun goes DOWN



Possimus
VALU
THANKS
FOR CHOOSING TO
SUPPORT
LOCAL
FAMILY BUSINESS

W

YOU





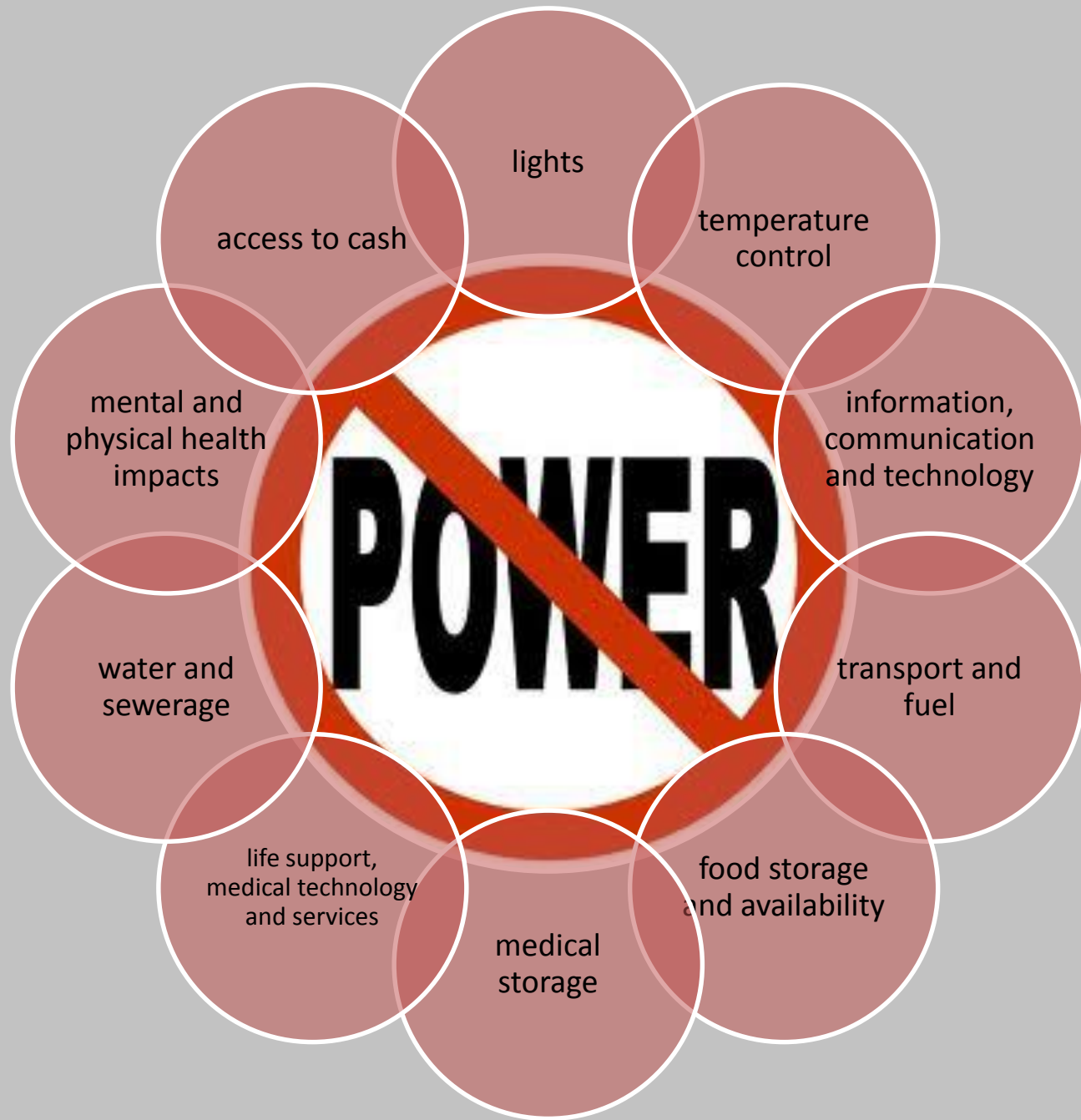


rediATM

ATM OUT
OF ORDER
DUE TO
POWER
OUTAGE
Sorry for the
inconvenience







SA, the driest state in the driest continent...then came the floods



Challenges

STATE EMERGENCY SERVICE

- scale of the flood
- impact on market gardens – the state's food bowl
- damage to key infrastructure
- water management
- lack of regulation and resources around dams, levees, gauges
- capacity of emergency services
- lack of previous experience and established systems









*Don't be a #floodwit....
Stay out of floodwater.*



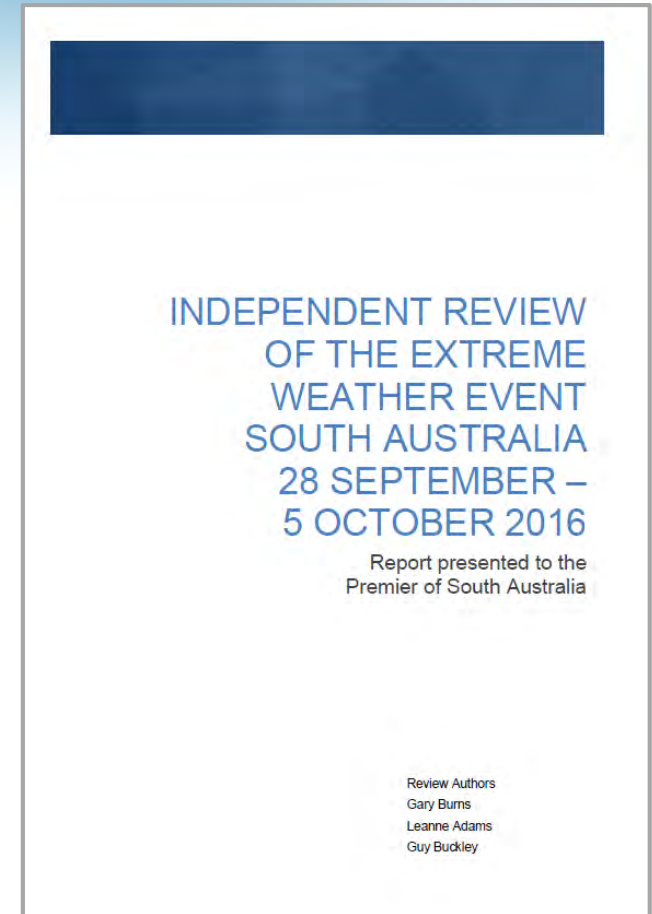
#floodwit(s)



The 'Burns' review

STATE EMERGENCY SERVICE

1. Review the emergency management response to impacts of the extreme weather event
2. Review the response to and management of state-wide power outage
3. Consider the adequacy of the State's prevention, preparedness, response and recovery arrangements



Key themes from the review

STATE EMERGENCY SERVICE

Issues relating to:

- the black system event
- emergency and incident management in SA
- public information
- flood risk
- resilience
- coordination of emergency relief and recovery

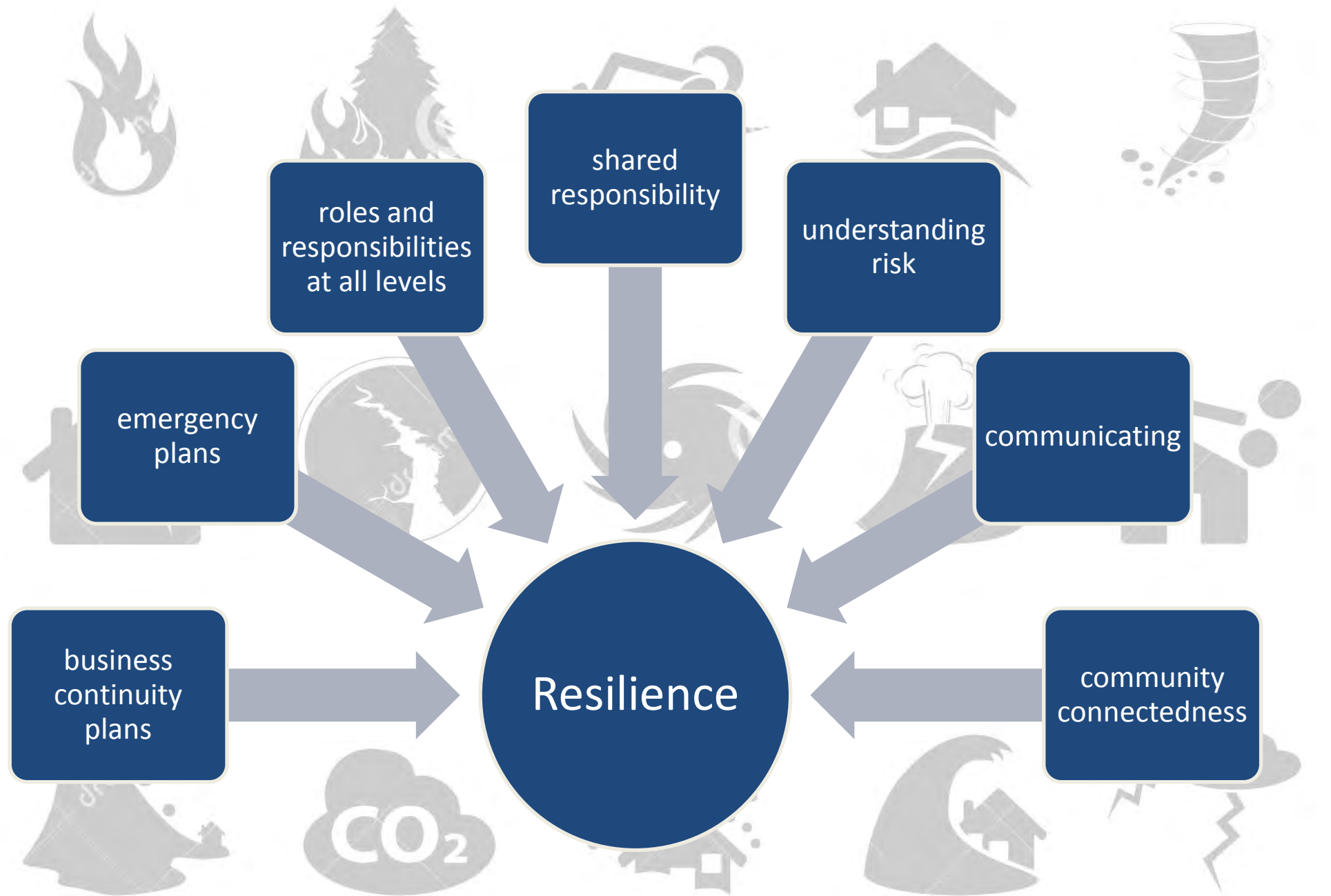
The black system event

STATE EMERGENCY SERVICE

- public information about timing of outages
- communicating with communities without power
- business continuity for small business, big business and industry, emergency services, government and non-government agencies, health and aged care facilities
- no power = no refrigeration, heating and cooling, food preparation
- supplies – food, fuel, water, medical
- essential services – health, communications, ICT,
- transport – fuel, traffic lights, closed roads









Final thoughts

STATE EMERGENCY SERVICE

- ? foreseeable
- ? will these events continue to grow in magnitude
- ? role of businesses
- ? role of government and emergency services
- ? role of the individual
- ? increasing resilience



